

How do I use filter selection?

1117 kbadmin April 3, 2016 [Tips & Tricks](#) 0 4968

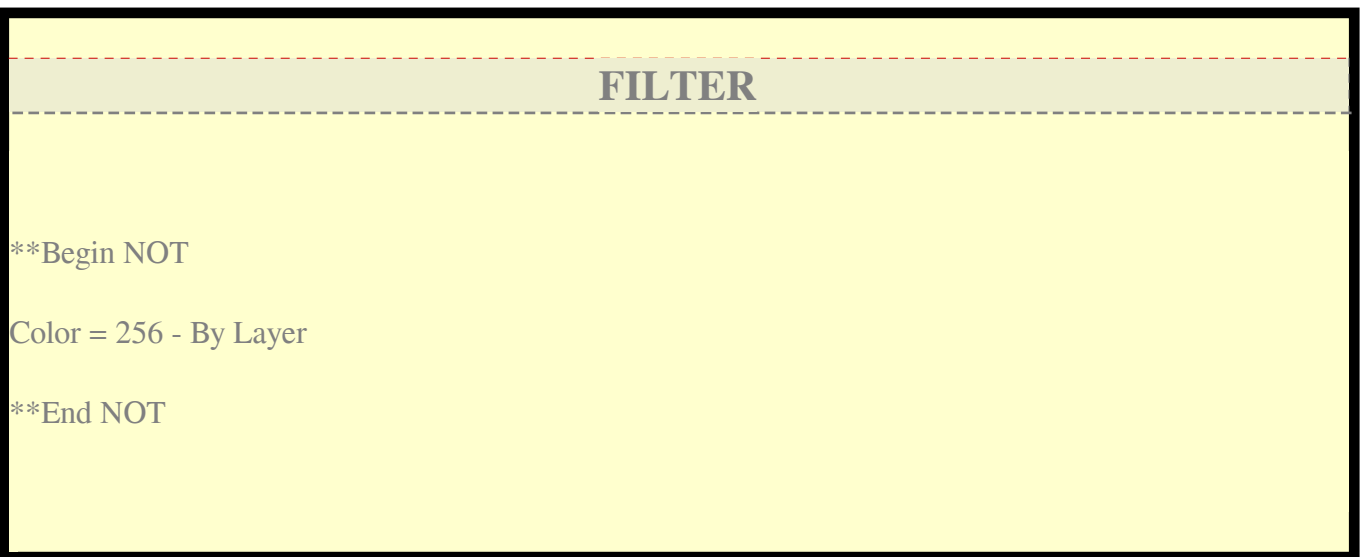
We have discussed about using Quick Select before. But there is one more utility that you can use, not as pretty as QSELECT. FILTER command offers a dialog box that might also scary when you first see it. But after you use it for a while, you may don't want to use QSELECT anymore.

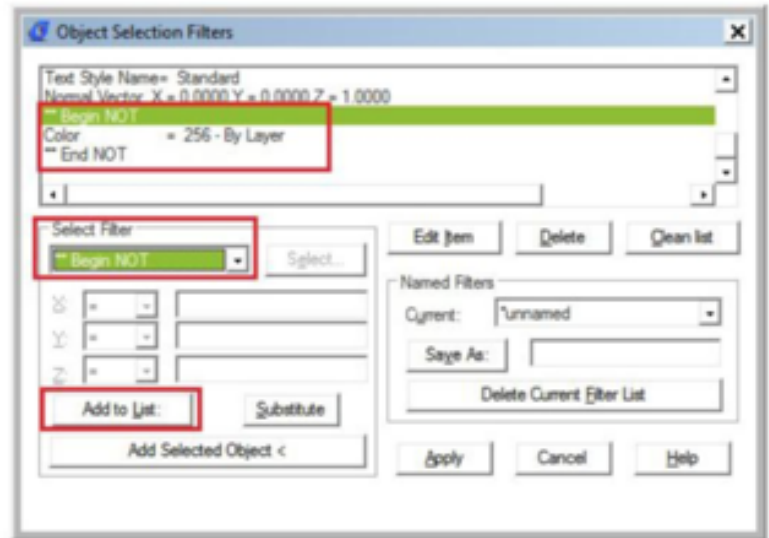
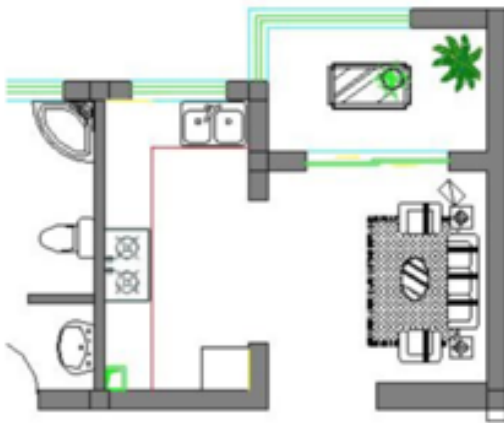
The advantages of using FILTER are:

- You can set multiple conditional filters at once. QSELECT only allow you to apply one conditional filter at a time. Then you need to apply another filter to your selection. You can save the filter setting and use it again later. Let's see how it works.

Using Conditional

You can open your drawing. Type FILTER then [enter]. Filter dialog box is loaded. Now if you want to select all objects that the color defined other than by layer. You can simply add this line.





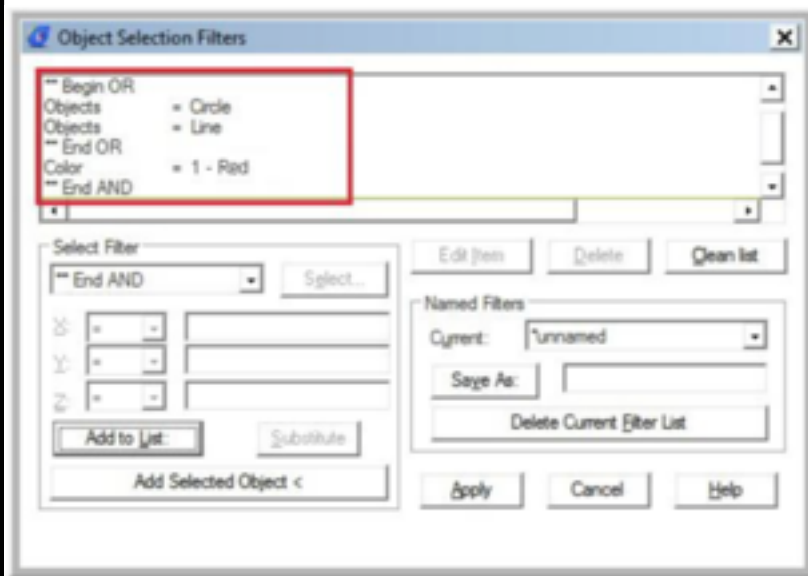
You can do this to select all objects that's not using „ByLayer“ color, and change them to ByLayer. You can add more conditional for complex objects. Let's say you want to quickly select all circle and lines, and the color must be red. Then the conditional lines in the filter must be:

Conditional Lines

```

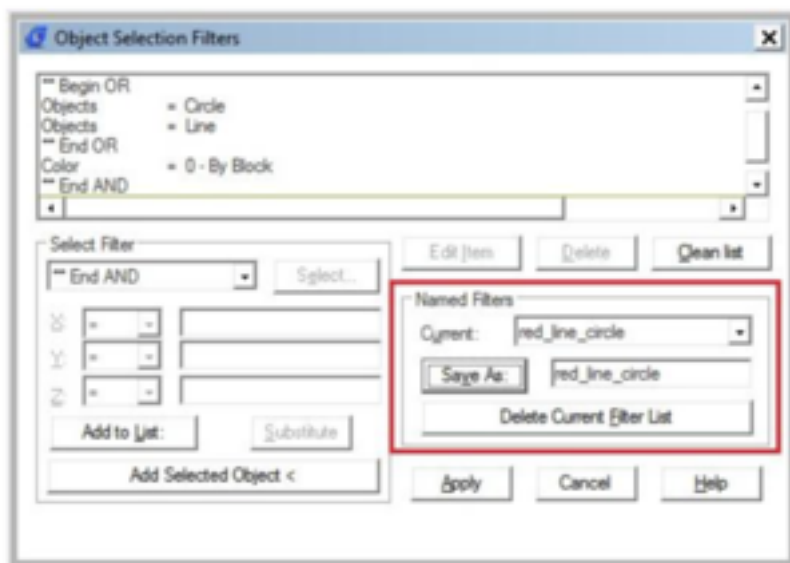
**Begin AND
**Begin OR
Object Object **End OR Color **End AND
= Circle = Line

= 1 - Red
73
Saving Filter
  
```



Saving Filter

The beauty of filter is it can be saved. If you defined many conditional filters, then it would be ridiculous if you have to set it every time you want to use it. Type the filter name in Named Filters group and click save as.



Now, after you save some filters, you can quickly select your objects with selective properties in just a few clicks!

Online URL: <https://www.kb2.gstarcad.com.my/article.php?id=1117>