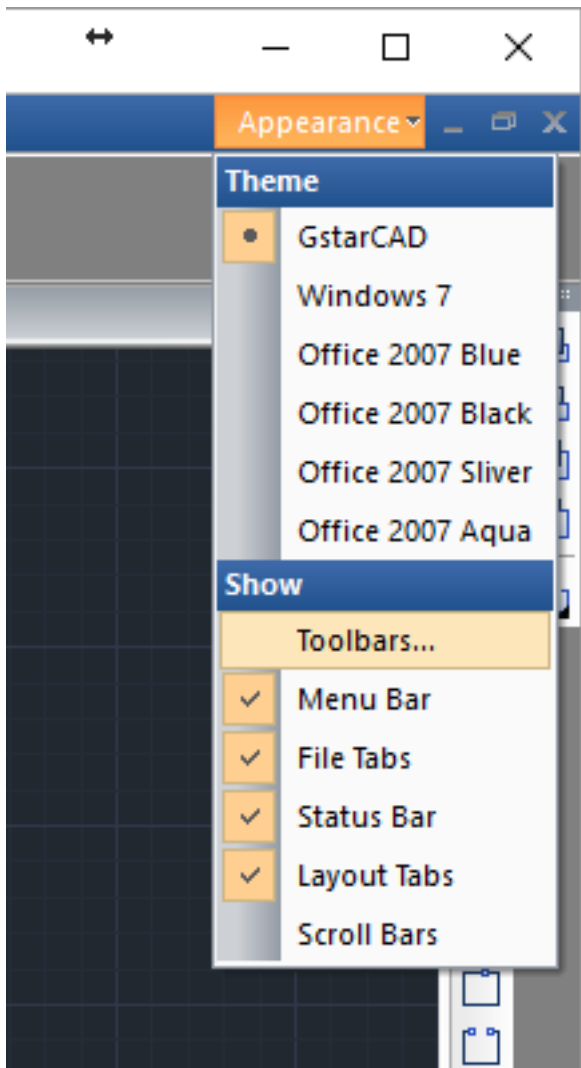


## How to retrieve missing Command Bar?

1135 kbadmin April 14, 2016 [Tips & Tricks](#) 0 14283

From the **Tools** menu select **Command Line**. Alternatively, Command line can be enable or disable by using shortcut, **CTRL + 9**.



Online URL: <https://www.kb2.gstarcad.com.my/article.php?id=1135>