

GstarCAD network with dongle version activation, legacy 2013 - 2017

1151 kbadmin July 6, 2021 [Activate / Deactivate](#) 0 5385

Network (USB Dongle) Activation

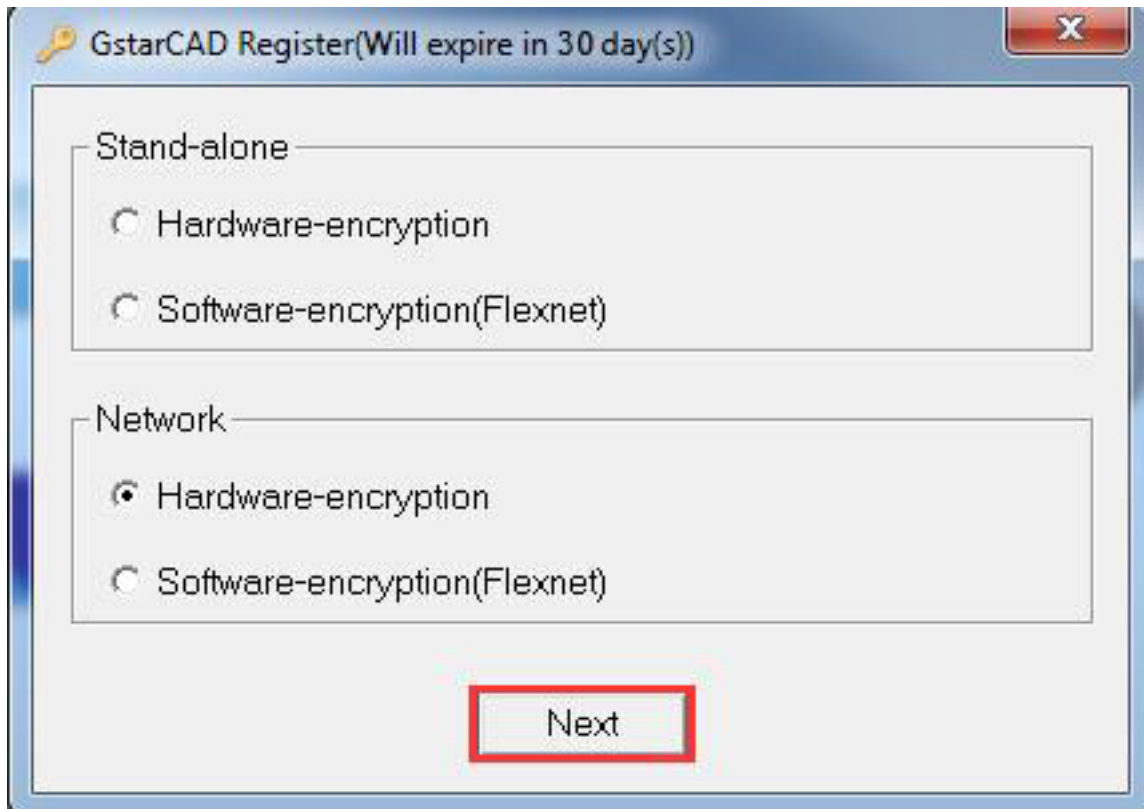
Server Setting You need to specify server computer and install network driver of the USB dongle. Insert the network dongle to USB interface after the installation of GstarCAD 2016. The dongle will be recognized automatically.

Client Setting

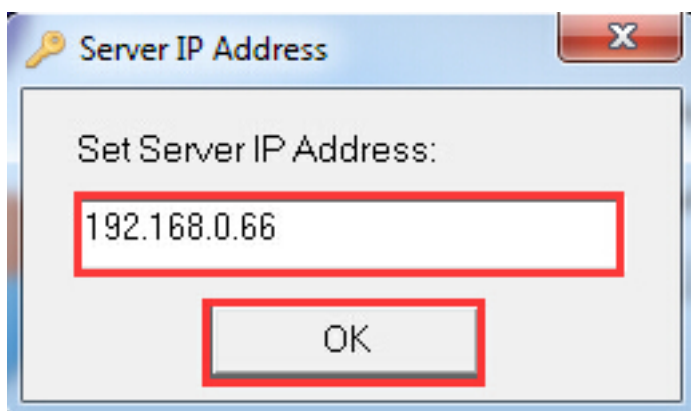
In a same local area network, start GstarCAD 2016 and then the Welcome to GstarCAD window will pop up, Select the version and click the “Activate” button.



The GstarCAD Register window opens. Please select **Hardware-encryption of Network** and click the “Next” button.



Specify the **IP address of server** and click the “**OK**” button and restart GstarCAD 2016 to activate.



The quantity of nodes is reduced in server until the one using in client is to be returned.

Warning content. Put here some alerts

Online URL: <https://www.kb2.gstarcad.com.my/article.php?id=1151>