

DWGCONVERT Command

1247 kbadmin April 11, 2022 [Compatible format](#) 0 8166

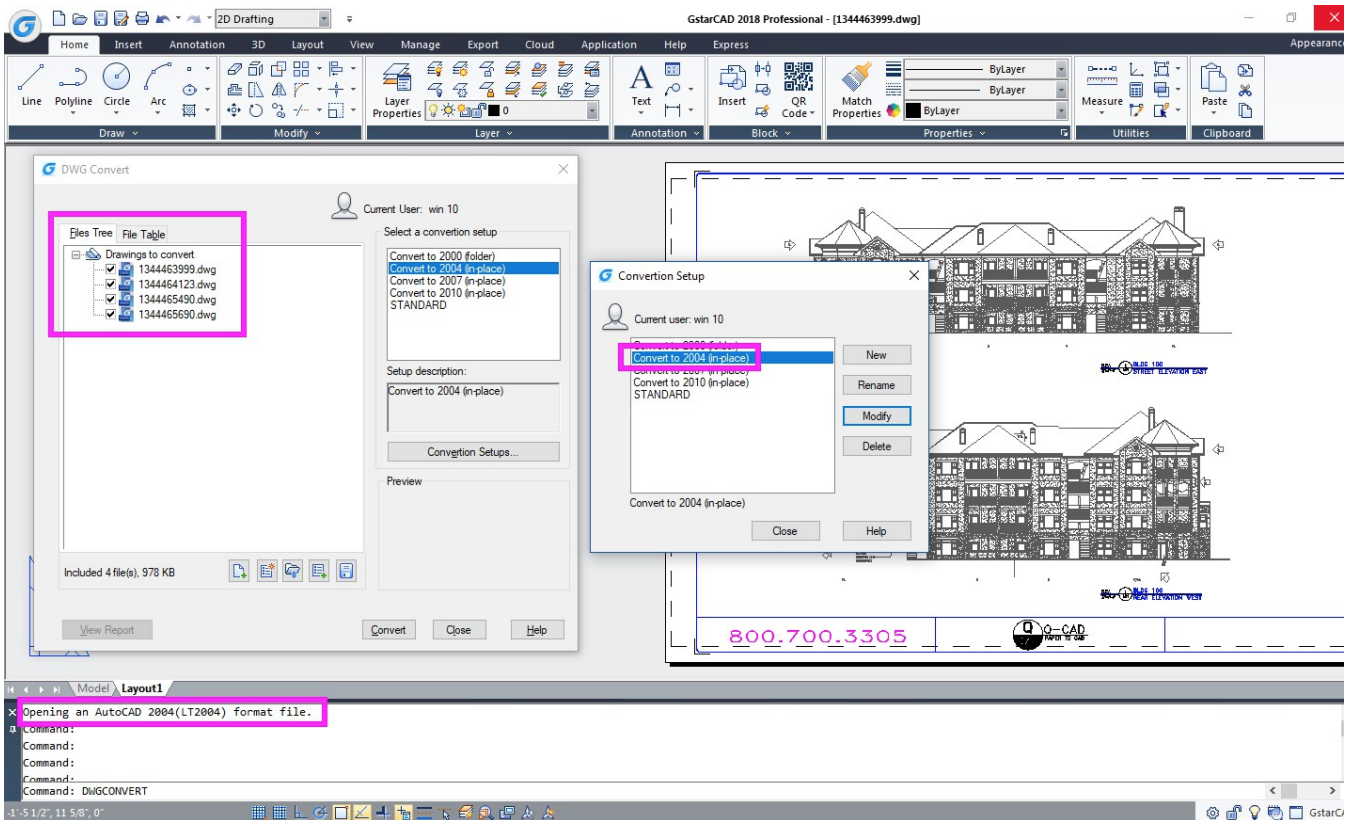
Command name: DWGCONVERT

Converts one or a bunch of selected drawing files to an older or current dwg version available.

The newly generated file can overwrite the original file, and it can also be compressed into a self-extracting EXE file or a ZIP file to facilitate batch format conversion of the entire project drawing.

The DWG file format can be changed in the following version:(AutoCAD 2013/ AutoCAD 2010/AutoCAD 2007/AutoCAD 2004/AutoCAD 2000/AutoCAD R14 (AutoCAD LT 98/AutoCAD LT 97). If you want to share drawings created in later versions with users who use earlier versions of the product, you can go to "File menu" > "DWG Convert" option or execute DWGCONVERT command to start performing batch conversion to an earlier version of the format.

You can choose different conversion package type; In place (overwrite files), Folder (set of files), self-extracting executable (*.exe) and Zip (*.zip).



Related tutorial video:

- [Open a drawing](#) 00:24
- [Work with multiple open drawing](#) 00:48
- [Close command](#) 01:05
- [Closeall command](#) 01:11
- [New command](#) 01:19
- [Qnew command](#) 01:19
- [Save command](#) 01:47
- [Qsave command](#) 01:47
- [Saveas command](#) 01:58
- [Import command](#) 02:16
- [Export command](#) 02:28
- [DWGconvert command](#) 03:30

Above video sources from [TUTORIAL - GETTING STARTED WITH GSTARCAD](#), enrol now for free.

Online URL: <https://www.kb2.gstarcad.com.my/article.php?id=1247>