

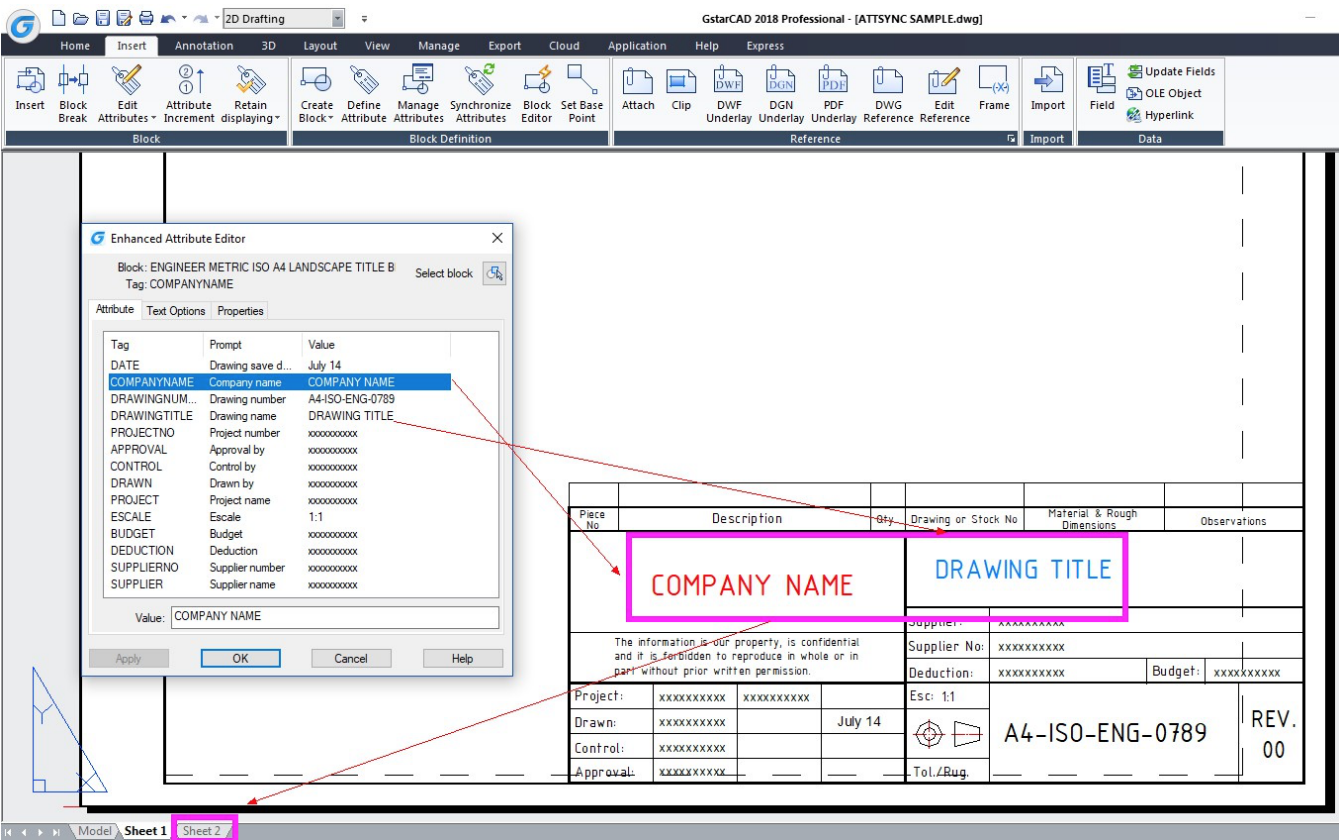
ATTSYNC Command

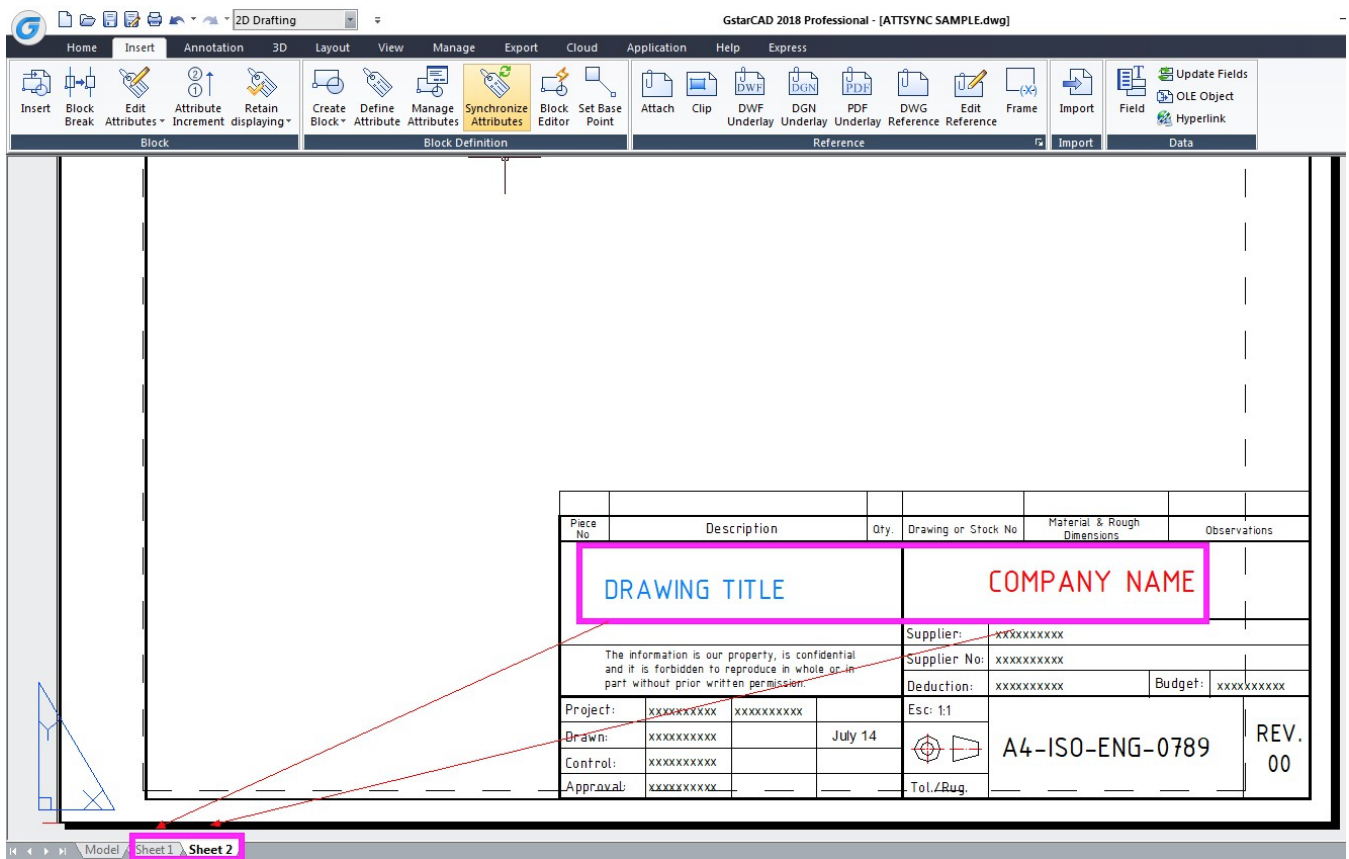
1249 kbadmin June 30, 2021 [Workflow](#) 0 4700

Command name: ATTSYNC

The ATTSYNC command applies attribute changes in block definitions to all block references of the same name. You can use this command to update instances of blocks containing attributes that were redefined using the BLOCK or BEDIT commands.

ATTSYNC does not change any values assigned to attributes in existing blocks. ATTSYNC removes all changes of format or features that are made by ATTEDIT or EATTEDIT commands. And it also deletes all extended data associated with blocks and might affect dynamic blocks and blocks created by third-party applications.





Online URL: <https://www.kb2.gstarcad.com.my/article.php?id=1249>