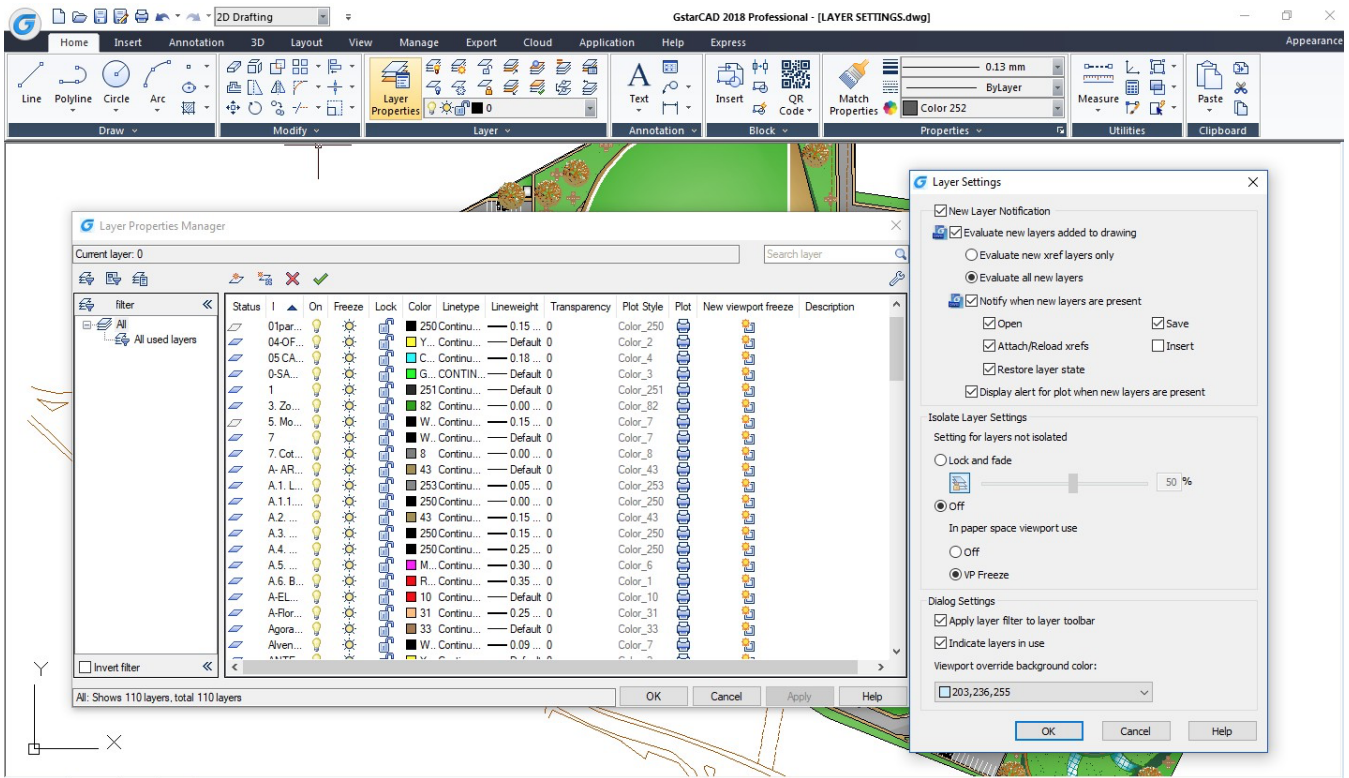


# Layer Settings

1251 kbadmin June 30, 2021 [Setting / Configuration](#) 0 5474

The layer properties manager dialog box has been enhanced by adding the Layer Settings option. It controls when notification occurs for new layers, layer behavior when some layer is isolated, whether layer filters are applied to the Layers toolbar, and the background color of viewport overrides in the Layer Properties Manager.



Online URL: <https://www.kb2.gstarcad.com.my/article.php?id=1251>