

ETRANSMIT command

2116 GstarCAD MY /KW August 12, 2021 [CAD Commands](#) 0 2386

The **ETRANSMIT** command is used to package a set of files for Internet transmission.

Command Access:

Menu : Application Menu > Send > E-Transmit...

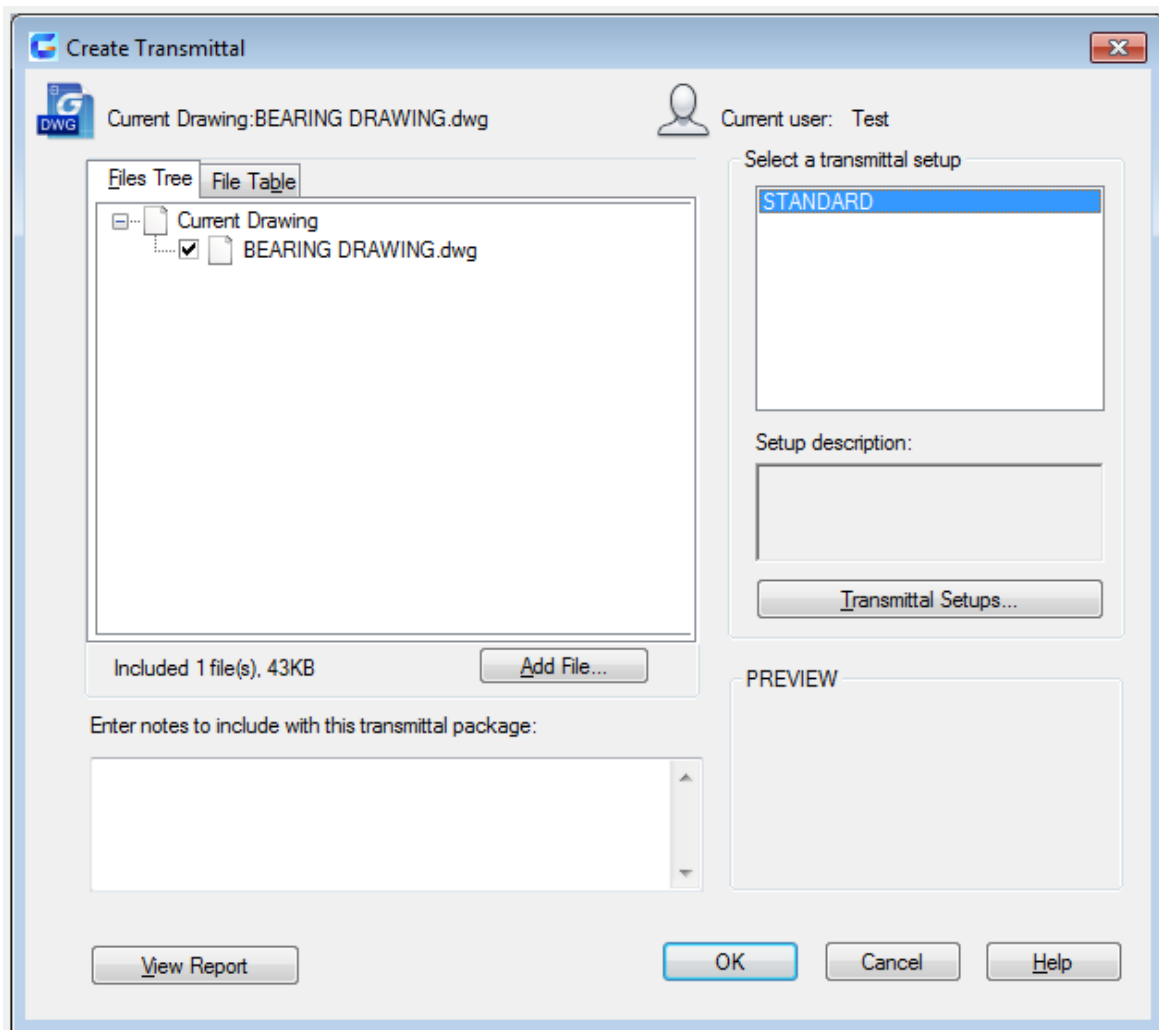
Menu : File > eTransmit

Command : ETRANSMIT

Function Description:

When running this command, it will automatically package all related subordinate files, such as external reference files and font files.

Inputting "-etransmit" under command prompt, it will display options.



Online URL: <https://www.kb2.gstarcad.com.my/article.php?id=2116>

