

# EXPORT command

2118 GstarCAD MY /KW April 11, 2022 [CAD Commands](#) 0 4618

The **EXPORT** command is used to save selected objects in other file formats.

## Command Access:

**Ribbon** : Export > Export > Export

**Menu** : File > Export

**Command** : EXPORT

## Function Description:

This command could export the following file formats:

**3D DWF (\*.dwf)/ 3D DWFx (\*.dwt)** : 3D Design Web Format

**Metafile (\*.wmf)** : Microsoft Windows metafile

**ACIS (\*.sat)** : ACIS solid object file

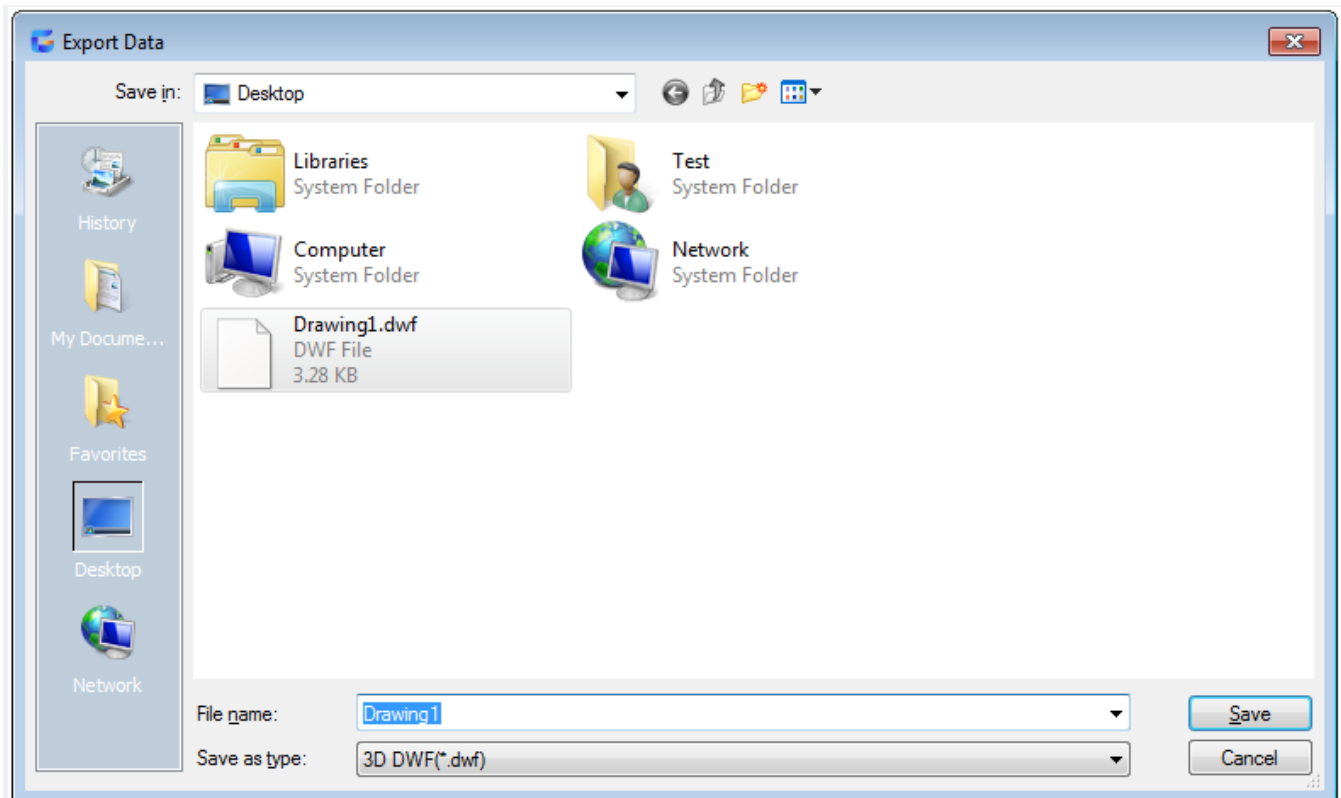
**Lithography (\*.stl)** : solid object light curing rapid prototyping file

**Encapsulated PS (\*.eps)** : encapsulated PostScript file

**DXX Extract (\*.dxx)** : attribute extraction DXFTM file

**Bitmaps (\*.bmp)** : device-independent bitmaps

**Block (\*.dwg)** : drawing file



---

Related tutorial video:

- [Open a drawing](#) 00:24
- [Work with multiple open drawing](#) 00:48
- [Close command](#) 01:05
- [Closeall command](#) 01:11
- [New command](#) 01:19
- [Qnew command](#) 01:19
- [Save command](#) 01:47
- [Qsave command](#) 01:47
- [Saveas command](#) 01:58
- [Import command](#) 02:16
- [Export command](#) 02:28
- [DWGconvert command](#) 03:30

Above video sources from [TUTORIAL - GETTING STARTED WITH GSTARCAD](#), enrol now for free.

Online URL: <https://www.kb2.gstarcad.com.my/article.php?id=2118>