

# KLL01 command

2171 GstarCAD MY /KW August 17, 2021 [CAD Commands](#) 0 2021

The **KLL01** command is used to sums up selected text or mtext.

The selected text can not contain any other characters behind the number and the selected mtext can only contain a row of numerical values without blank spaces. Figures with prefix can also make statistics Summation and the system will summate them by different prefixes.

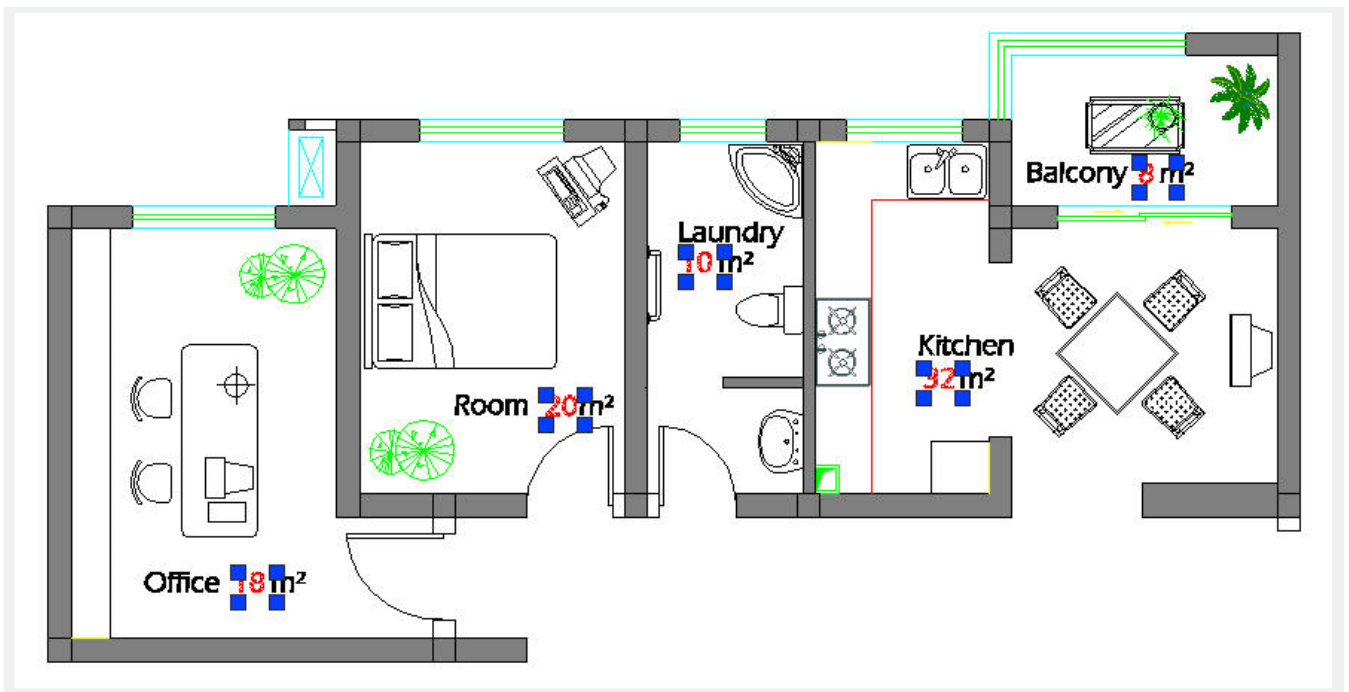
**Command Access :**

**Command Entry :** KLL01

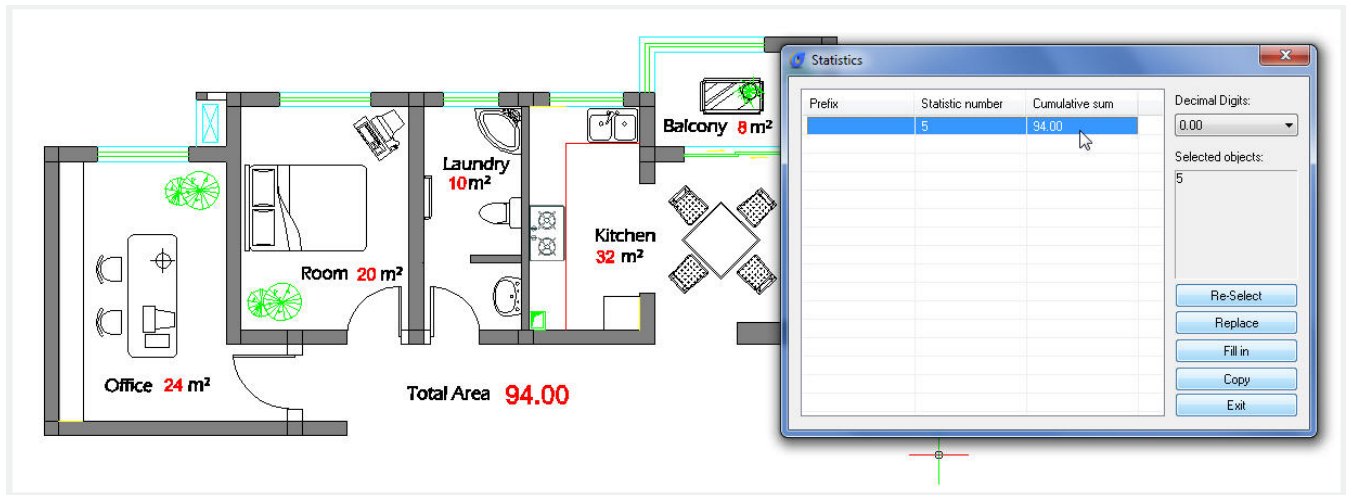
**Menu :** Text>Statistics Summation

Start the command and the command line prompts as follows:

**Select objects:** Select Text or Mtext numerical value



In the Statistics dialog box, you can see the cumulative sum from the selected text numerical values. You can also re-select, replace, copy text numerical value again plus fill-in (show) the cumulative sum in any point of your current drawing



Online URL: <https://www.kb2.gstarcad.com.my/article.php?id=2171>