

LAYERSTATE command

2178 GstarCAD MY /KW August 17, 2021 [CAD Commands](#) 0 2735

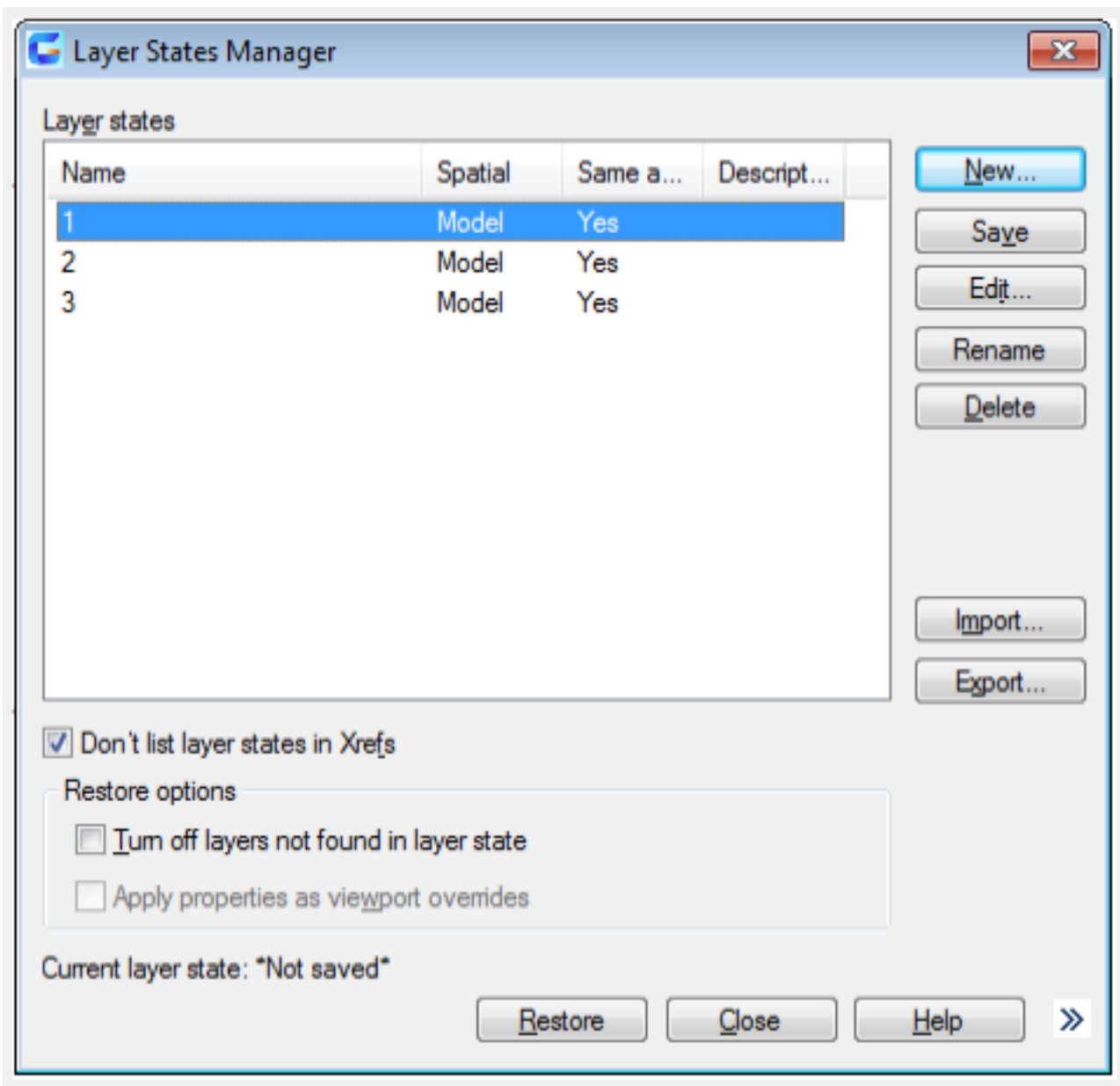
The **LAYERSTATE** command is used to save, edit, restore and manage the layer states.

Command Access:

Menu : Format > Layer States Manager...

Command : LAYERSTATE

Function Description:



Users could save layer settings as named layer. They could also restore, edit, import and export named layers in other drawing.

Online URL: <https://www.kb2.gstarcad.com.my/article.php?id=2178>