

# LAYOUTWIZARD command

2188 GstarCAD MY /KW August 17, 2021 [CAD Commands](#) 0 1326

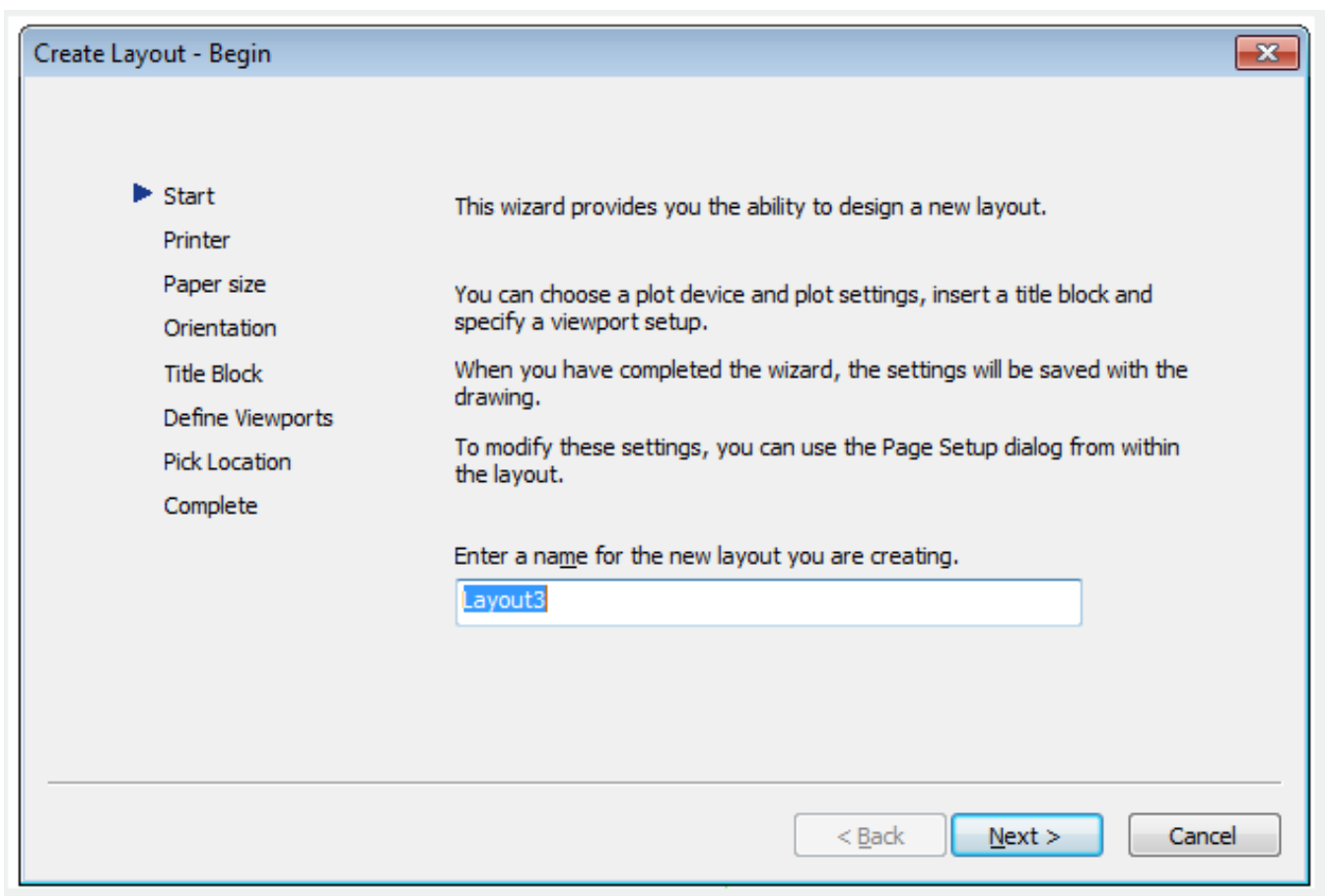
The **LAYOUTWIZARD** command is used to create new layout and specify page and print settings.

## Command Access:

**Menu :** Insert > Layout > Create Layout Wizard

**Command:** LAYOUTWIZARD

## Function Description:



Online URL: <https://www.kb2.gstarcad.com.my/article.php?id=2188>