

LINETYPE command

2203 GstarCAD MY /KW April 14, 2022 [CAD Commands](#) 0 4138

The **LINETYPE** command is used to load, set up and modify linetypes.

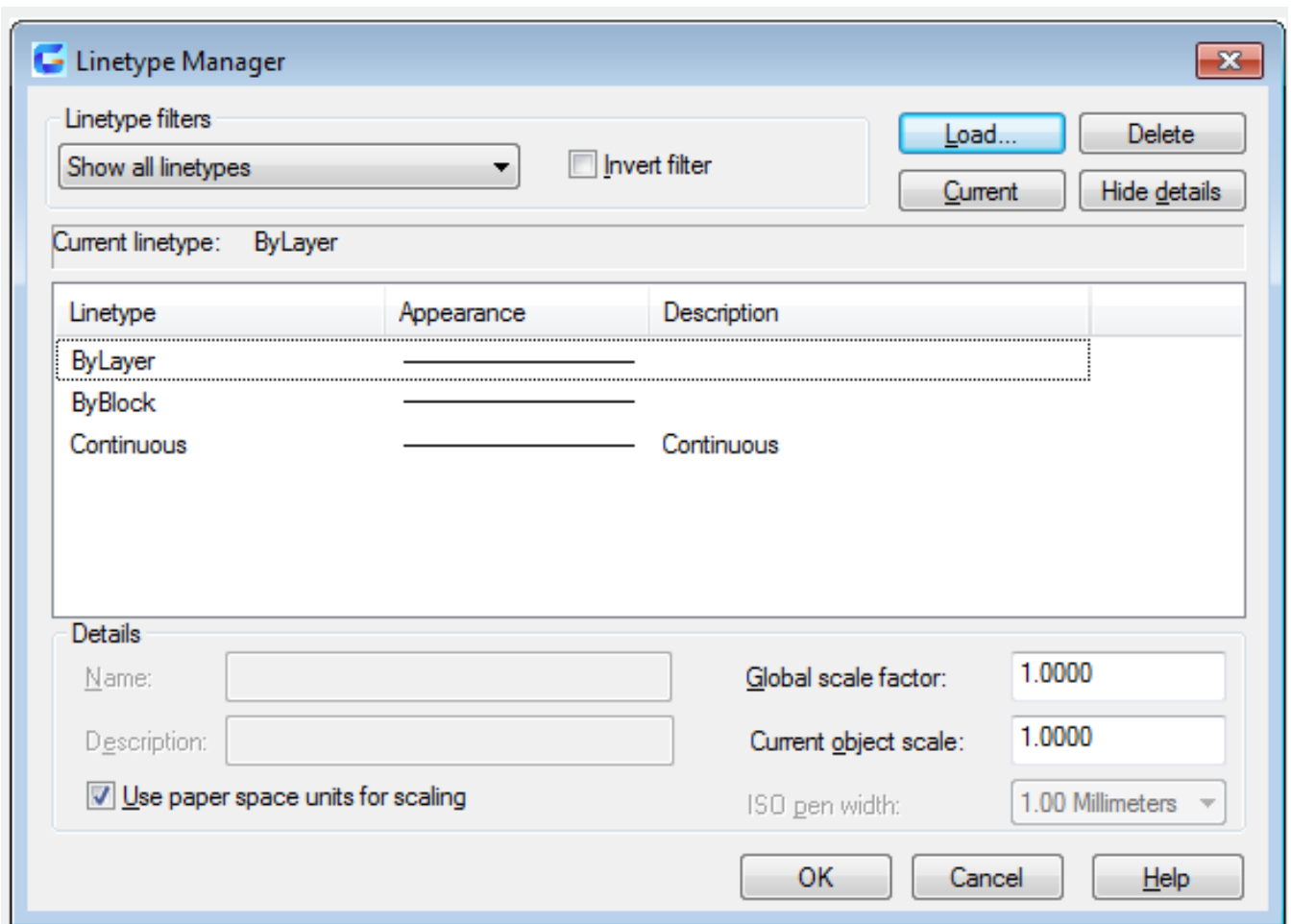
Command Access:

Ribbon : Home > Properties > LINETYPE CONTROL

Menu : Format> Linetype...

Command : LINETYPE

Function Description:



Inputting "-linetype" under command prompt, it will display options.

Related tutorial video:

- [Status bar related setting](#) 00:23
- [Line command](#) 00:33
- [Polar](#) 00:39
- [Edit objects + grips](#) 00:56
- [Grips System variable](#) 00:56
- [Use grips to edit objects](#) 00:56
- [Properties command](#) 01:16
- [Display and change the properties of objects](#) 01:16
- [Linetype command](#) 01:26
- [-Linetype command](#) 01:26
- [Control Line Scale](#) 01:26
- [Color command](#) 01:33
- [Change the color of an object](#) 01:33
- [Set the current color](#) 01:33
- [Polyline command](#) 02:00
- [Fillet command](#) 02:40
- [Draw Rectangles and Polygons](#) 03:01
- [Revcloud command](#) 03:10
- [Donut command](#) 03:14
- [Draw Donuts](#) 03:14
- [Edit objects + grips](#) 03:23
- [Grips System variable](#) 03:23
- [Use grips to edit objects](#) 03:23
- [ARC command](#) 03:54
- [How to draw an arc with specific arc length](#) 03:54
- [Circle command](#) 04:42
- [Concentric circle command](#) 04:54
- [Properties command](#) 05:54
- [Mirror command](#) 05:16

Above video sources from [TUTORIAL - GETTING STARTED WITH GSTARCAD](#), enrol now for free.

Online URL: <https://www.kb2.gstarcad.com.my/article.php?id=2203>

