

# QSAVE command

2306 GstarCAD MY /KW April 11, 2022 [CAD Commands](#) 0 4286

The **QSAVE** command is used to save the current drawing by specified default file formats.

## **Command Access:**

**Menu** : Application menu > Save

**Menu** : File > Save

**Command** : QSAVE

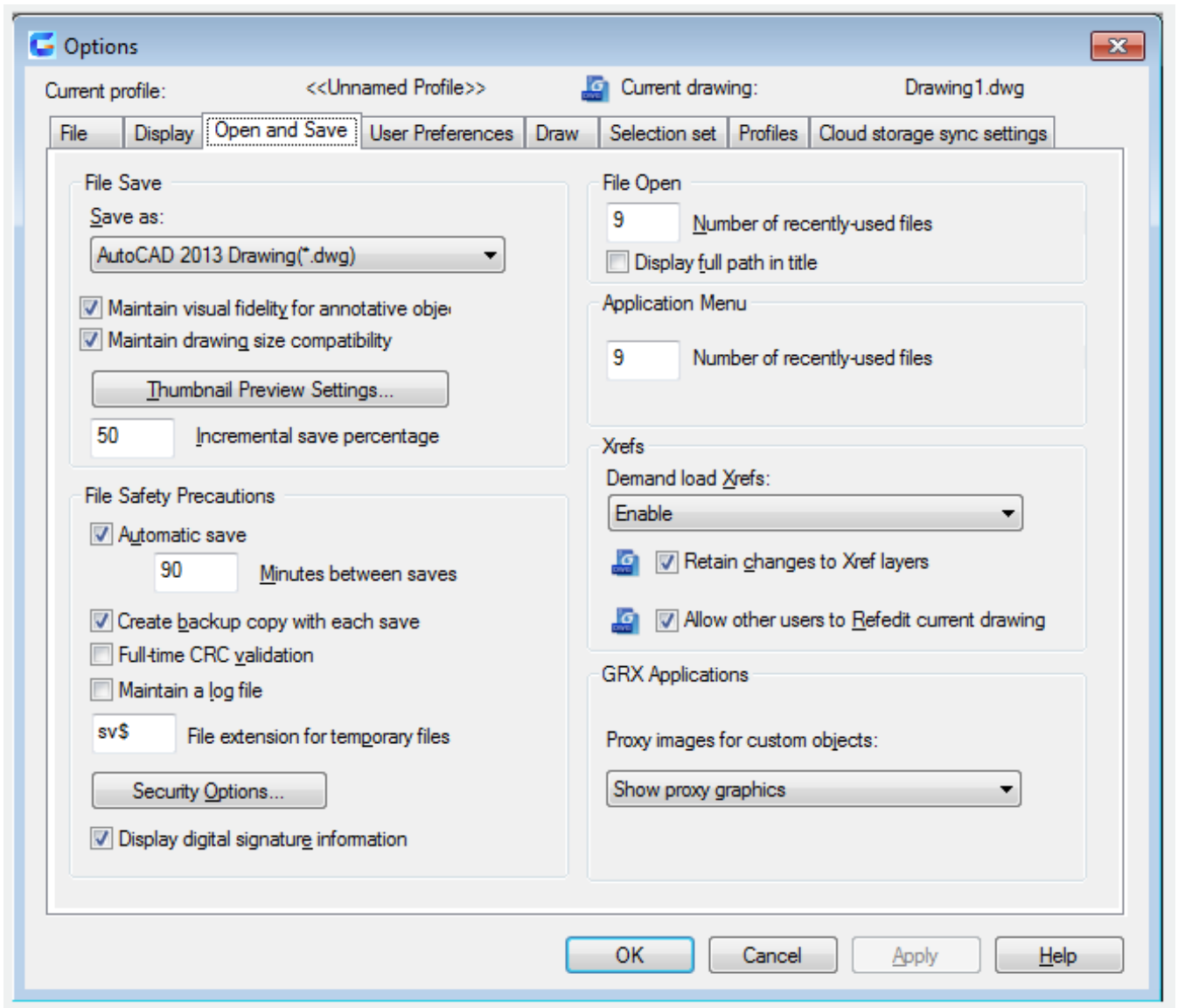
## **Function Description:**

If the current drawing has been named, the program will save it without requirement of new file name.

Users could use the **SAVEAS** command to save current drawing with a different name. If the current drawing is read-only, users could also save it by the **SAVEAS** command with a different name.

If the current drawing has not been named, the "Save drawing as" dialog box pops up, users should save it with a specified name and formats.

**Note:** when saving drawings by the **QSAVE** command, the drawing formats will be specified by "Open and Save" options in the "Options" dialog box.



Related tutorial video:

- [Open a drawing](#) 00:24
- [Work with multiple open drawing](#) 00:48
- [Close command](#) 01:05
- [Closeall command](#) 01:11
- [New command](#) 01:19
- [Qnew command](#) 01:19
- [Save command](#) 01:47
- [Qsave command](#) 01:47

- [Saveas command](#) 01:58
- [Import command](#) 02:16
- [Export command](#) 02:28
- [DWGconvert command](#) 03:30

Above video sources from [TUTORIAL - GETTING STARTED WITH GSTARCAD](#), enrol now for free.

Online URL: <https://www.kb2.gstarcad.com.my/article.php?id=2306>