

# XATTACH command

2444 GstarCAD MY /KW August 25, 2021 [CAD Commands](#) 0 2685

The **XATTACH** command is used to attach a DWG file as an external reference.

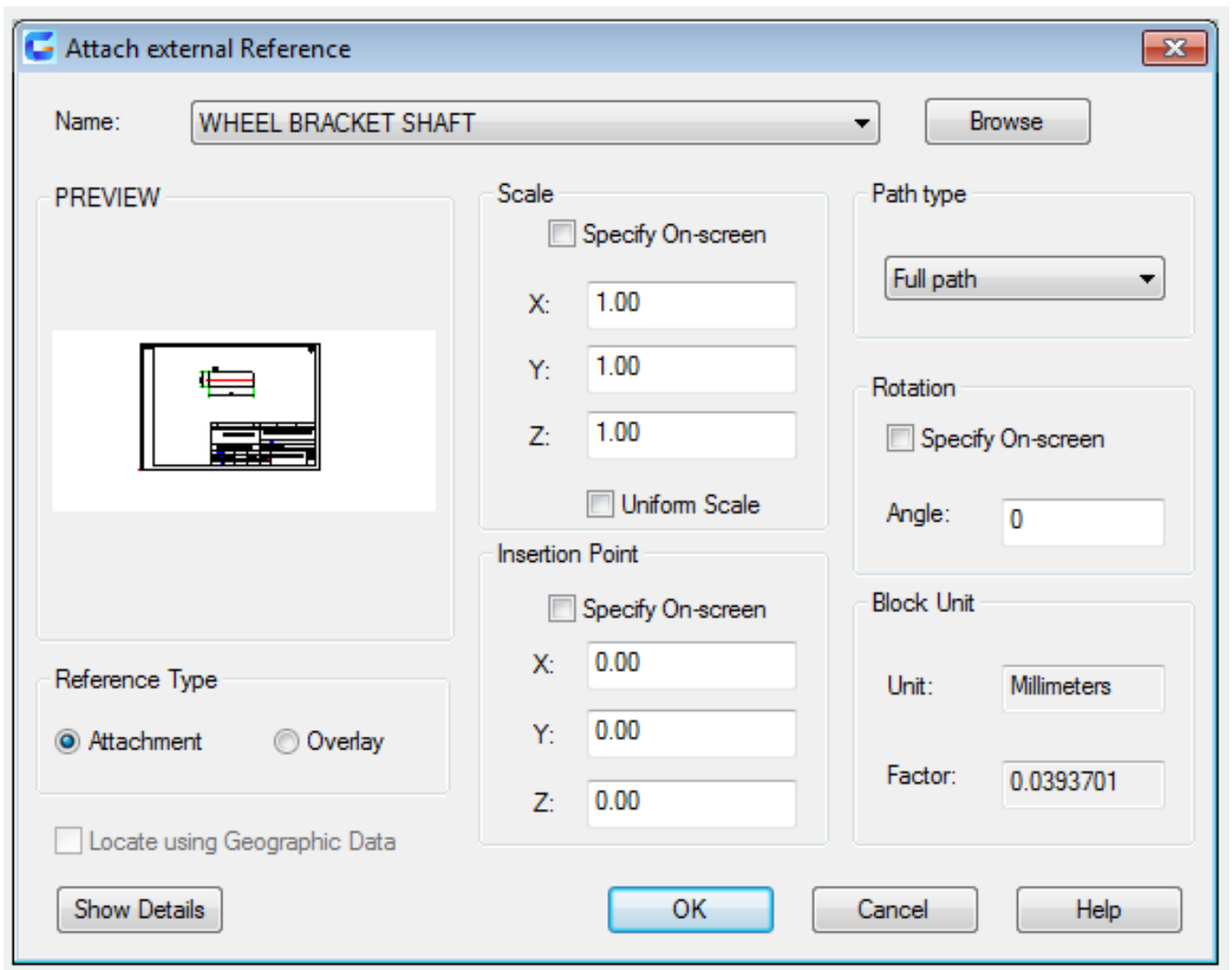
## Command Access:

**Ribbon** : Insert > Reference > Attach

**Menu** : Insert> DWG reference

**Command** : XATTACH

## Function Description:



When attaching the metafiles in current drawing as external reference, it could also be linked to current drawing. Open or reload the reference drawing, the current drawing will display all modifies. Inputting "XATTACH" in command line, the "select reference file" dialog box pops up, and then select the specified DWG file, the "Attach External Reference" dialog box displays.

Online URL: <https://www.kb2.gstarcad.com.my/article.php?id=2444>