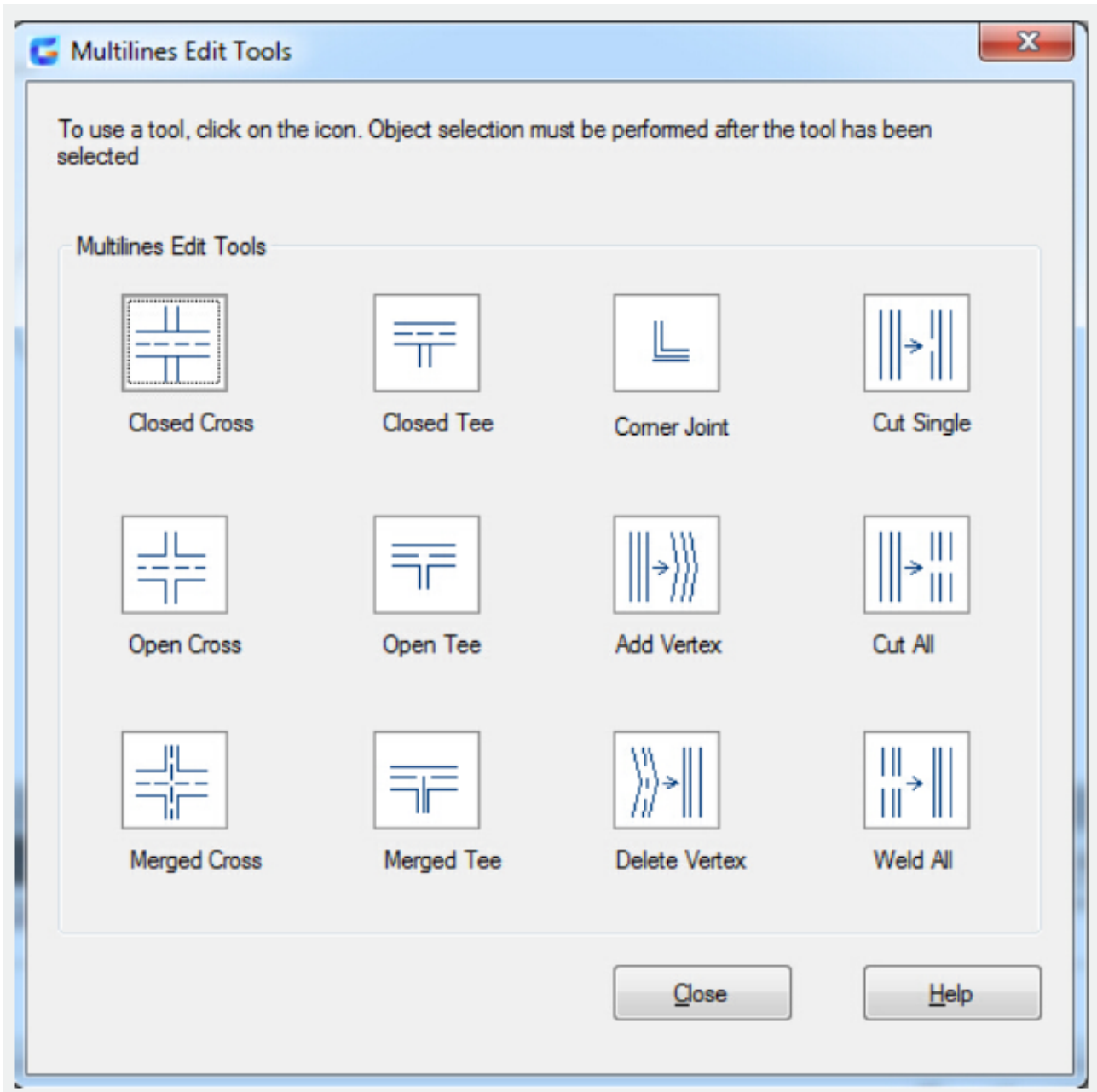


Modify Multiline

2552 GstarCAD MY /KW November 9, 2021 [Workflow](#) 0 1293

Multiline is a kind of special object. You can modify it by [MLEDIT](#) , but can not modify it by fillet, chamfer and some other function.



Edit Multiline Styles

To change the properties , end caps and the background fill of subsequently created multiline, you can edit multiline styles using the command [MLSTYLE](#)

Online URL: <https://www.kb2.gstarcad.com.my/article.php?id=2552>