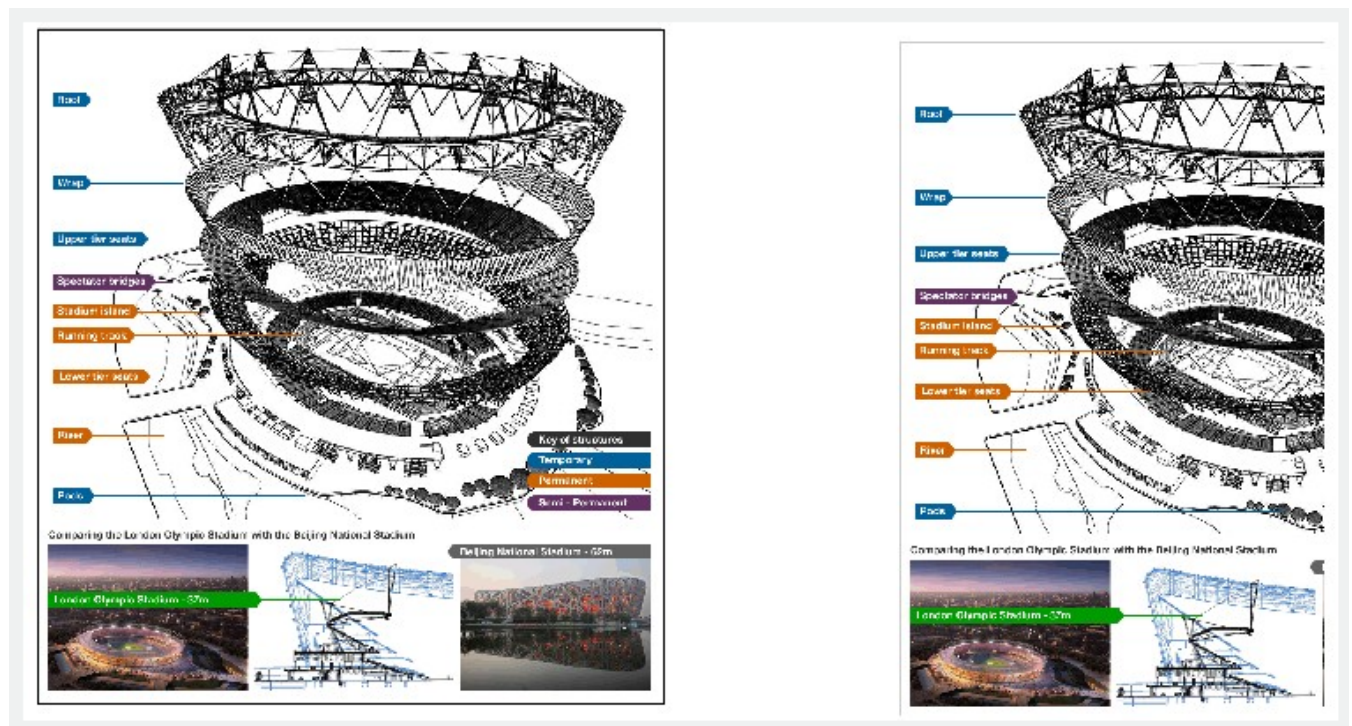


Show and Hide Raster Image Boundaries

2577 GstarCAD MY /KW November 9, 2021 [Workflow](#) 0 2086

If you hide an image boundary, the boundary can not be plotted or displayed and cannot be selected with the pointing device, which prevents that the image is accidentally moved or modified. Clipped images are still displayed to their specified boundary limits, when image boundaries are hidden; only the boundary is affected.

Note: When an image frame is turned off, you cannot select images using the Pick or the Window SELECT options



Online URL: <https://www.kb2.gstarcad.com.my/article.php?id=2577>