

# DWF Underlay

2589 GstarCAD MY /KW November 9, 2021 [Workflow](#) 0 2416

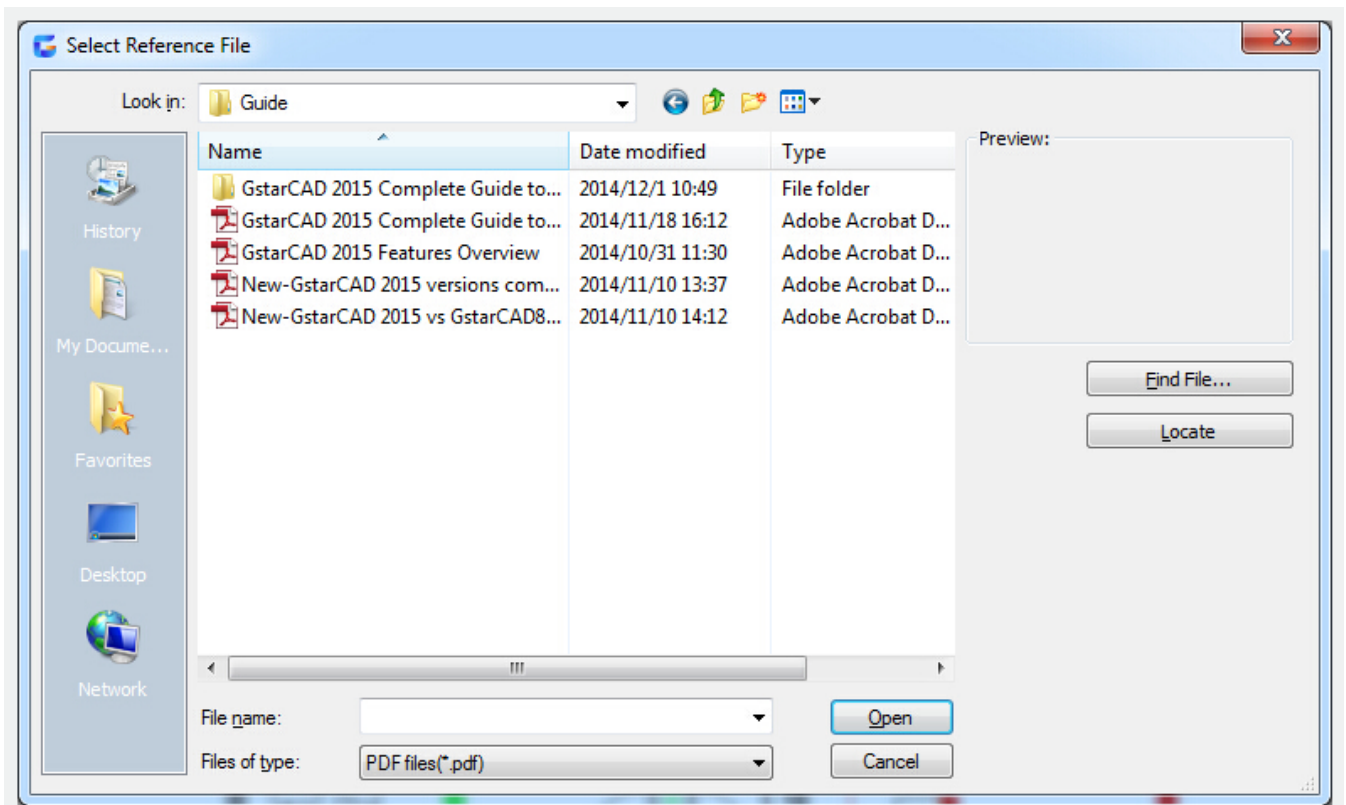
Menu : Insert > DWF Underlay

Ribbon : Insert > Underlay



Command Entry : [DWFATTACH](#)

After starting the order and selecting inserted DWF files according to directions, the following dialog box will pop up:



Path type : optional full path, relative path or no path, if the current file is not saved, the relative path cannot be used.

Online URL: <https://www.kb2.gstarcad.com.my/article.php?id=2589>

