

Change Text

2628 GstarCAD MY /KW November 11, 2021 [Workflow](#) 0 2770

When there are several texts in the drawing which need to be modified, it would be much more tedious and inefficient to modify them one by one. Change text allows users make bulk modifications to several texts. For example, this function can modify the alignment, height, width, position, rotation, style and content of several texts simultaneously. It greatly improves the efficiency of single text and Mtext modifications. You can access it from:

Menu: Text>Change Text

Command Entry: Changetext

For example, in a table or part list created, we can apply change text. After the command is started, a message will be displayed in the command line >

Please select object:

Then select the text to be modified, immediately a prompt message will be displayed>

Height (H) / Justify (J) / Location (L) / Rotation (R) / Style (S) / Text (T) / Undo (U) / Width (W):

Height :Changes the text height. Within this option there are three more: Single (I) / List (L) / New height for all objects:

Single : This changes the text height one by one.

List : This shows the text information such as: Min. and Max. text height and average.

New Height for all objects: This changes the height of the selected text at once.

PART LIST		PART LIST	
SMALL BUSHINGS	3	SMALL BUSHINGS	3
SHAFT	1	SHAFT	1
SUB - BASE PLATE	1	SUB - BASE PLATE	1
MULTI-HOLE BASE PLATE	1	MULTI-HOLE BASE PLATE	1
THREADED SHAFT	1	THREADED SHAFT	1
BUSHING "B"	2	BUSHING "B"	2
SUPPORT PLATE	1	SUPPORT PLATE	1
BUSHING "A"	1	BUSHING "A"	1
BMW - THREADED PIN "B"	1	BMW - THREADED PIN "B"	1
BMW - THREADED PIN "A"	1	BMW - THREADED PIN "A"	1
TILT			1
DESC			QTY

Command Bar

Please select object:
Opposite corner: Find out 11, total 11

Please select object:
Height (H)/Justify (J)/Lacation (L)/Rotation (R)/Style (S)/Text (T)/Undo (U)/Width (W): H

Single (I)/List (L)/<New Height for all objects>: 2.5

Command:

Justify : Changes the text justification. Within this option there are several more:

Align (A) / Fit (F) / Center (C) / Left (L) / Middle (M) / Right (R) / TL / TC / ML / MC / MR / BL / BC / BR:

Align: This aligns text according to a specific point.

Fit: Adjust the length of a single text by specifying two points.

Center: Justify the context at the center of the frame area text.

Left: Justify the context at the left of the frame area text.

Middle: Justify the context at the middle of the frame area text.

Right: Justify the context at the right of the frame area text.

TL: Justify the context at the top left of the frame area text.

TC: Justify the context at the top center of the frame area text.

ML: Justify the context at the middle left of the frame area text.

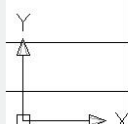
MC: Justify the context at the middle center of the frame area text.

MR: Justify the context at the middle right of the frame area text.

BL: Justify the context at the bottom left of the frame area text.

BC: Justify the context at the bottom center of the frame area text.

BR: Justify the context at the bottom right of the frame area text.

PART LIST					B	PART LIST		
SMALL BUSHINGS	3	STEEL		Welded ITEM 1-9		SMALL BUSHINGS	3	STEEL
SHAFT	1	Q235A				SHAFT	1	Q235A
SUB - BASE PLATE	1	STEEL		16mm. thickness		SUB - BASE PLATE	1	STEEL
MULTI-HOLE BASE PLATE	1	STEEL		16mm. thickness		MULTI-HOLE BASE PLATE	1	STEEL
THREADED SHAFT	1	Q235A		Welded ITEM 8		THREADED SHAFT	1	Q235A
BUSHING "B"	2	Q235A		Welded ITEM 5		BUSHING "B"	2	Q235A
SUPPORT PLATE	1	STEEL		10,5mm. thickness		SUPPORT PLATE	1	STEEL
BUSHING "A"	1	Q235A		Welded ITEM 5		BUSHING "A"	1	Q235A
BMW - THREADED PIN "B"	1	Q235A		M12 x 1,4 x 104		BMW - THREADED PIN "B"	1	Q235A
BMW - THREADED PIN "A"	1	Q235A		M10 x 2,5 x 100		BMW - THREADED PIN "A"	1	Q235A
TILT PLATE	1	STEEL		15mm. thickness		TILT PLATE	1	STEEL
DESCRIPTION	QTY	MATERIAL	TREATMENT	REMARKS	DESCRIPTION	QTY	MATERIAL	
PARTS LIST					A	PARTS LIST		
PROVALS	DATE	GSTARCAD 2013				TITLE BMW CHASSIS CLAMP ASSEMBLY		
								
PARTS LIST								

Location : Changes the text location by selecting and moving the text frame base point.

		3	STEEL		Welded ITEM 1-9
■	SHAFT	1	Q235A		
	SUB - BASE PLATE	1	STEEL		16mm. thickness
	MULTI-HOLE BASE PLATE	1	STEEL		16mm. thickness
	THREADED SHAFT	1	Q235A		Welded ITEM 8
	BUSHING "B"	2	Q235A		Welded ITEM 5
	SUPPORT PLATE	1	STEEL		10,5mm. thickness
	BUSHING "A"	1	Q235A		Welded ITEM 5
	BMW - THREADED PIN "B"	1	Q235A		M12 x 1,4 x 104
	BMW - THREADED PIN "A"	1	Q235A		M10 x 2,5 x 100
■	TILT PLATE	1	STEEL		15mm. thickness
	DESCRIPTION	QTY	MATERIAL	TREATMENT	REMARKS
PARTS LIST					
APPROVALS	DATE	GSTARCAD 2013			

B

SHAFT

SUB - BASE PLATE

MULTI-HOLE BASE PLATE

THREADED SHAFT

BUSHING "B"

SUPPORT PLATE

BUSHING "A"

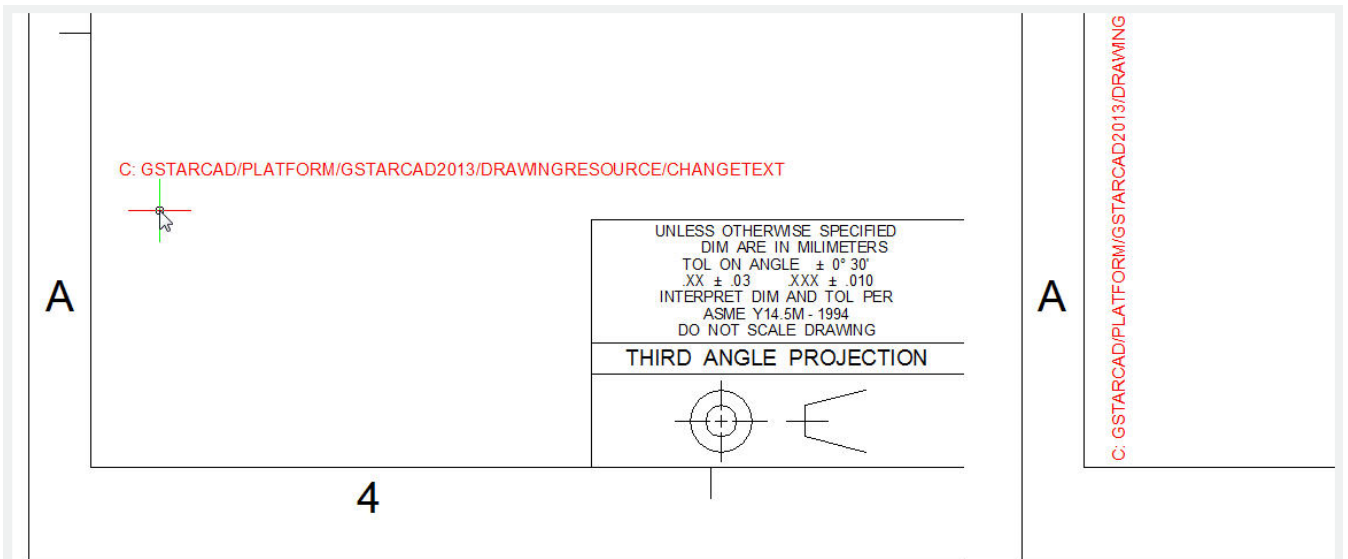
BMW - THREADED PIN "B"

BMW - THREADED PIN "A"

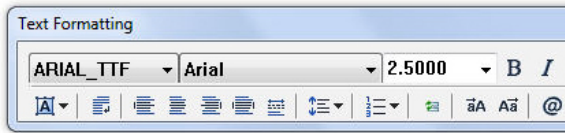
TILT PLATE

Place in other point

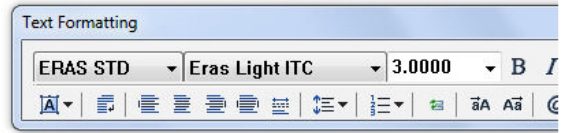
Rotation : Changes the text rotation according to the input value.



Style : Changes the text style by typing the style name in the command line.



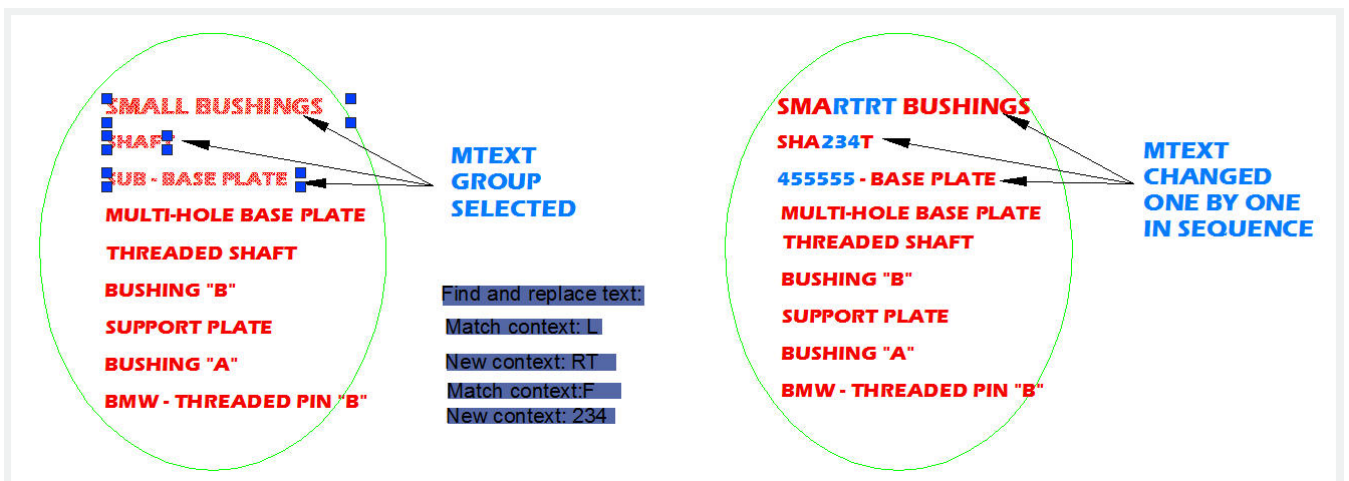
PARTS LIST		
DESCRIPTION	QTY	MATERIAL
SMALL BUSHINGS	3	STEEL
SHAFT	1	Q235A
SUB - BASE PLATE	1	STEEL
MULTI-HOLE BASE PLATE	1	STEEL
THREADED SHAFT	1	Q235A
BUSHING "B"	2	Q235A
SUPPORT PLATE	1	STEEL
BUSHING "A"	1	Q235A
BMW - THREADED PIN "B"	1	Q235A
BMW - THREADED PIN "A"	1	Q235A
TILT PLATE	1	STEEL



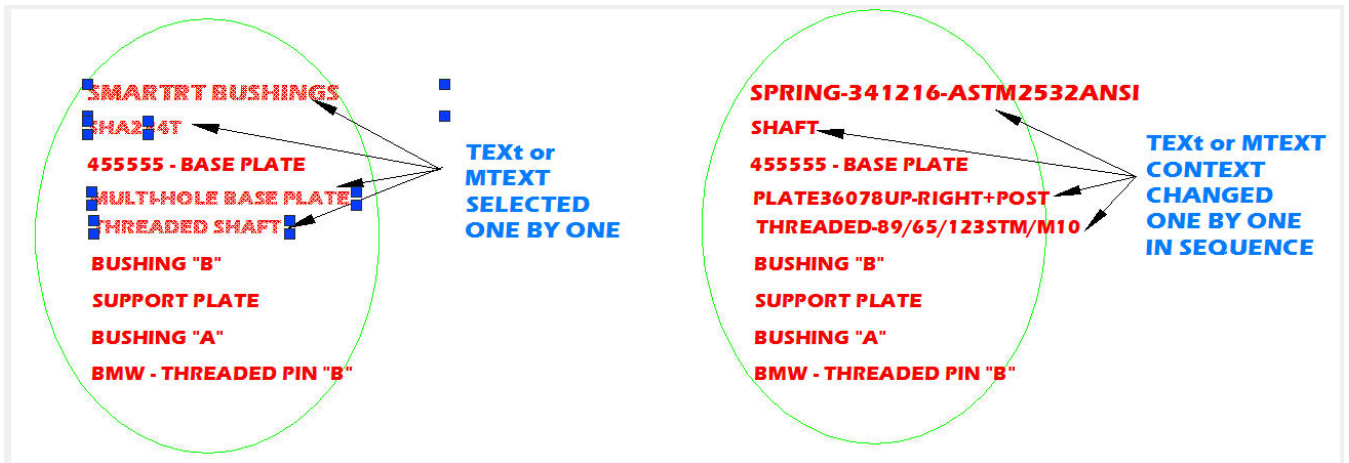
PARTS LIST		
DESCRIPTION	QTY	MATERIAL
SMALL BUSHINGS	3	STEEL
SHAFT	1	Q235A
SUB - BASE PLATE	1	STEEL
MULTI-HOLE BASE PLATE	1	STEEL
THREADED SHAFT	1	Q235A
BUSHING "B"	2	Q235A
SUPPORT PLATE	1	STEEL
BUSHING "A"	1	Q235A
BMW - THREADED PIN "B"	1	Q235A
BMW - THREADED PIN "A"	1	Q235A
TILT PLATE	1	STEEL

Text : Find and replace text. Within this option there are three more: Single (I) / Re-enter (R) / Global (G):

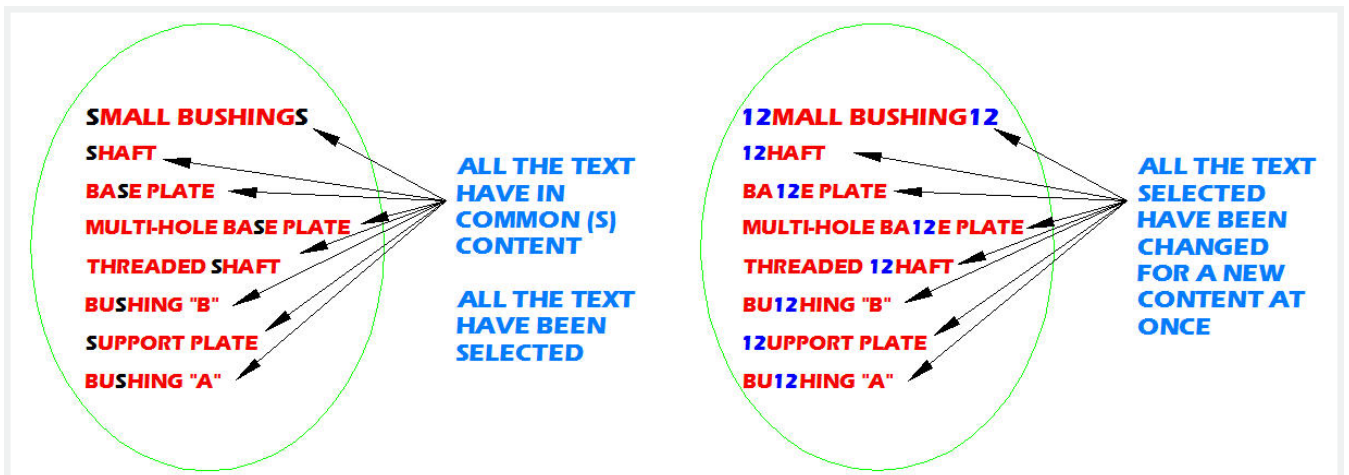
Single : If you select one or more texts, this will match and change any context within the text selected in sequence (one by one).



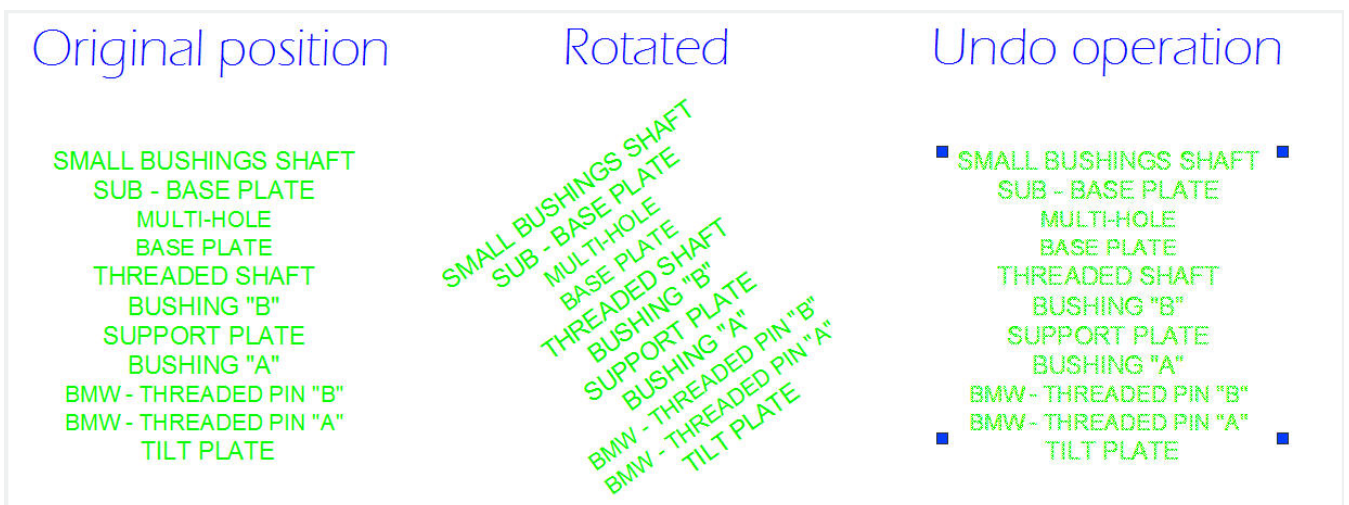
Re-enter : This retypes a new content by typing it in the command line and then replaces it.



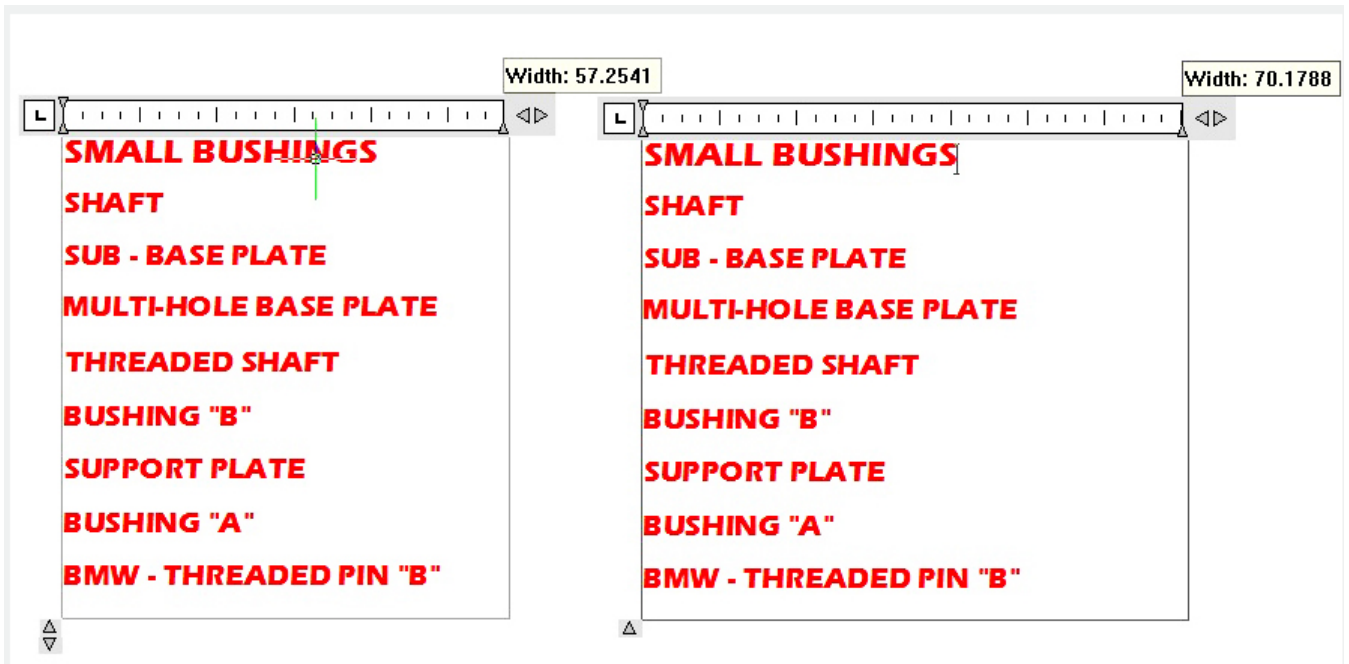
Global : If you select one or more text, this will match and change any context within a text group selected at once.



Undo : like CTRL+Z, this will undo an operation after selecting any other.



Width : Changes the frame area text by entering a new width factor value.



Online URL: <https://www.kb2.gstarcad.com.my/article.php?id=2628>