

Make Linetype

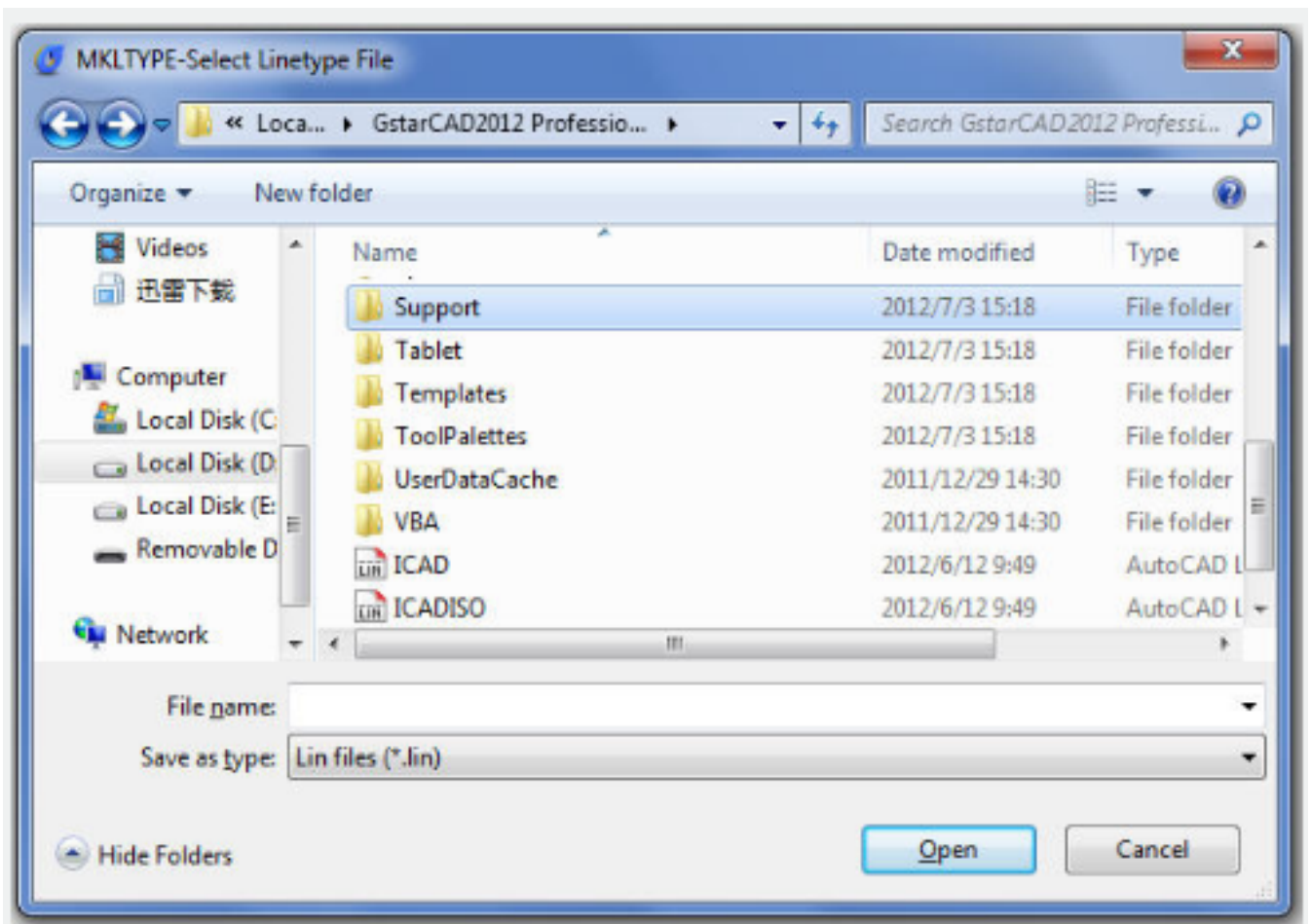
2690 GstarCAD MY /KW December 1, 2021 [Workflow](#) 0 2426

Creates a linetype based on selected objects.

Menu : Express tools>Tools>Make Linetype

Command Entry : MKLTYPE

Once the command is started, the following window will be displayed. You can find the Line files (*.lin) and apply them to the current drawing.



Online URL: <https://www.kb2.gstarcad.com.my/article.php?id=2690>